

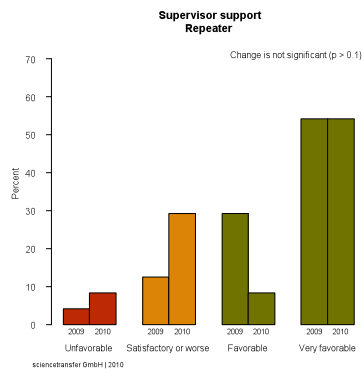
HealthScreening 2006-2010

Anonymous-A AG Report for the company

Responsible Dr. Dirk Hanebuth
sciencetransfer GmbH
Nordstrasse 134
8037 Zürich

Contact dirk.hanebuth@sciencetransfer.com
+41 - (0)78 - 78 40 800

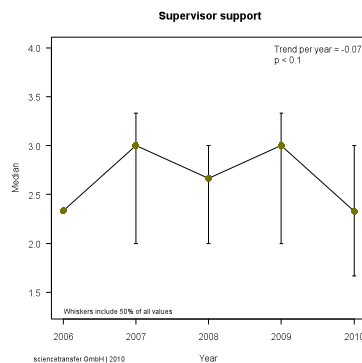
How to read the graphics: samples



The first graph in a topic shows the analysis of „repeaters“ who used their login of the last year to continue the health screening in the current year.

Here, the data sets of individuals can be merged.

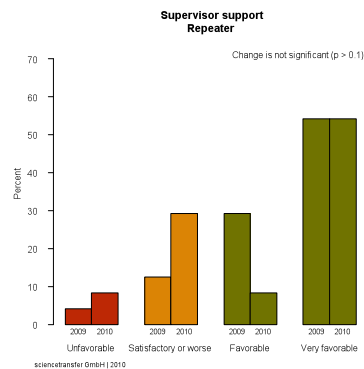
Impact: You see „real“ differences on an individual level between the years.



The second graph in a topic shows the analysis of (potentially) independent samples in different years. It would be possible that we compare completely different groups of people. The total sample contains „repeaters“ and „non-repeaters“.

Impact: You see trends for all participants in all waves.

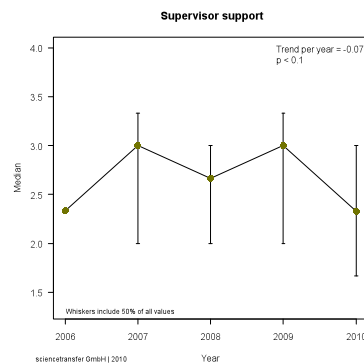
How to read the graphics: color code



All values in this analysis are compared with cut-offs of risk classes:

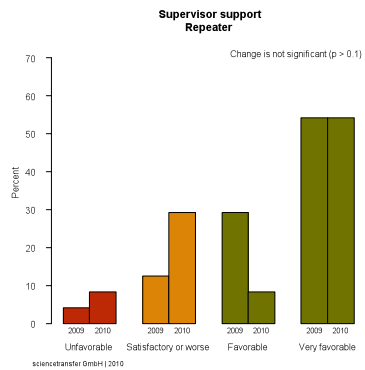
green: good/very good | orange: borderline | red: bad

The **bar color** in the bar diagram represents the risk class.



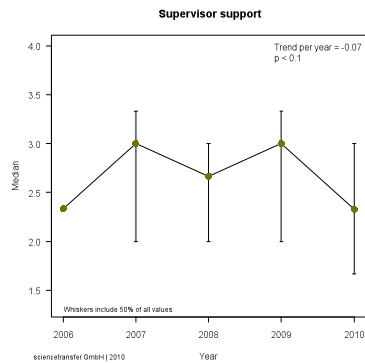
The **bullet color** in the line diagram indicates the risk class.

How to read the graphics: changes



The first graph shows a test of significant changes **between the current and the previous year.**

A change is significant if $p < 0.05$ ($p < 5\%$)



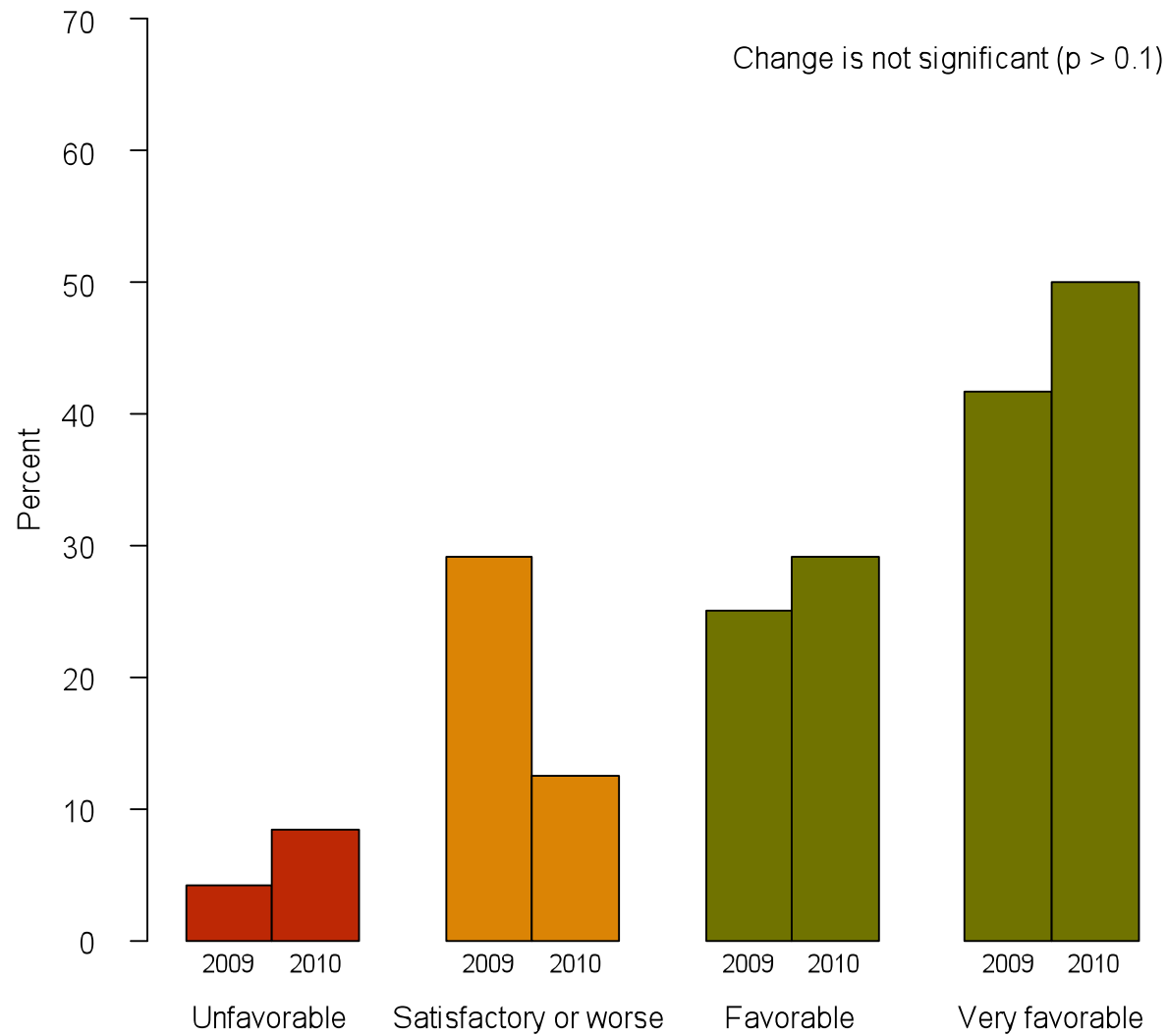
The second graph shows a trend analysis **for the years 2006 -2010.**

A trend is significant if $p < 0.1$ ($p < 10\%$)

Location Anonymous

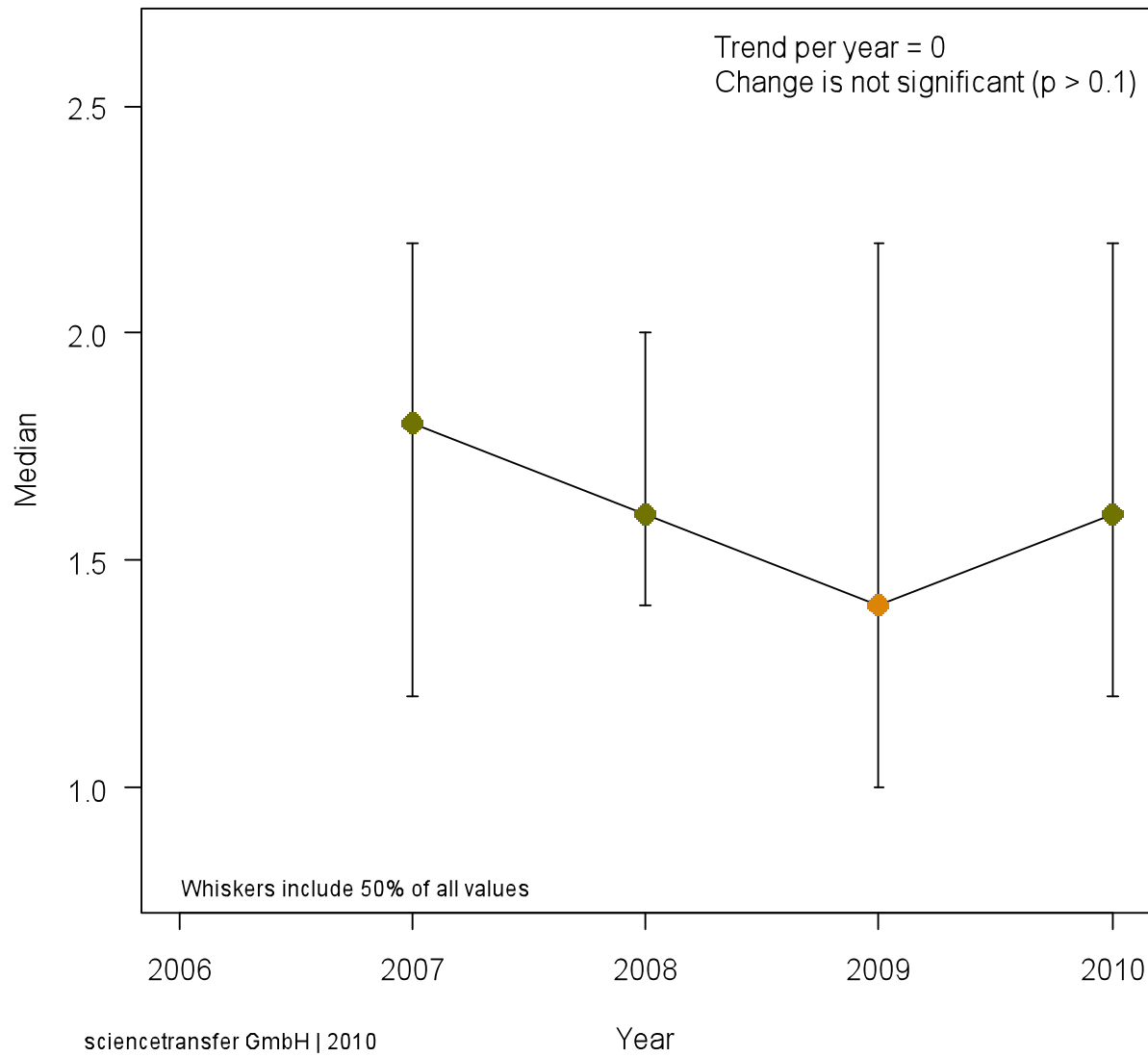
Stress and resources

Recreation at Work Repeater

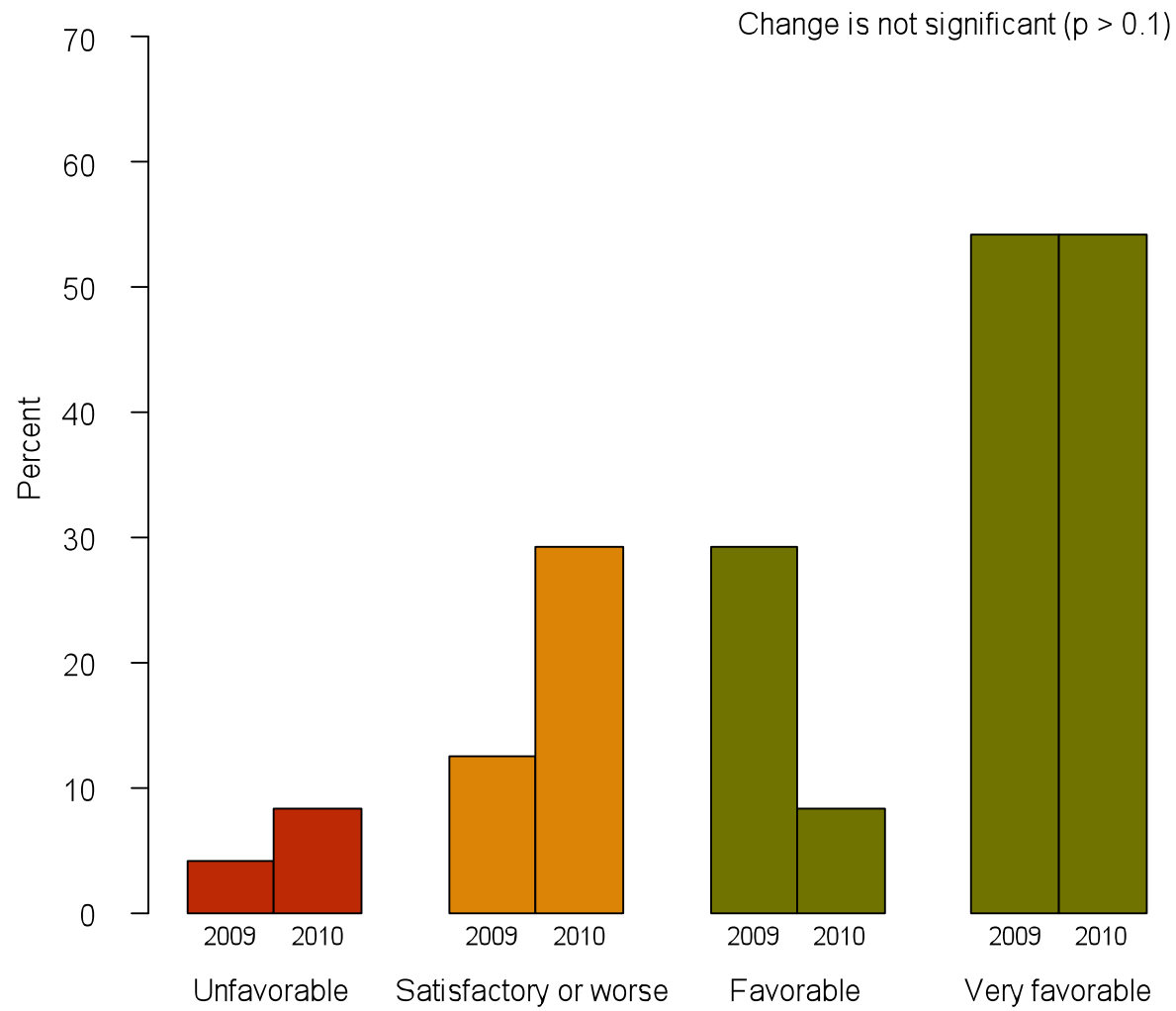


sciencetransfer GmbH | 2010

Recreation at Work

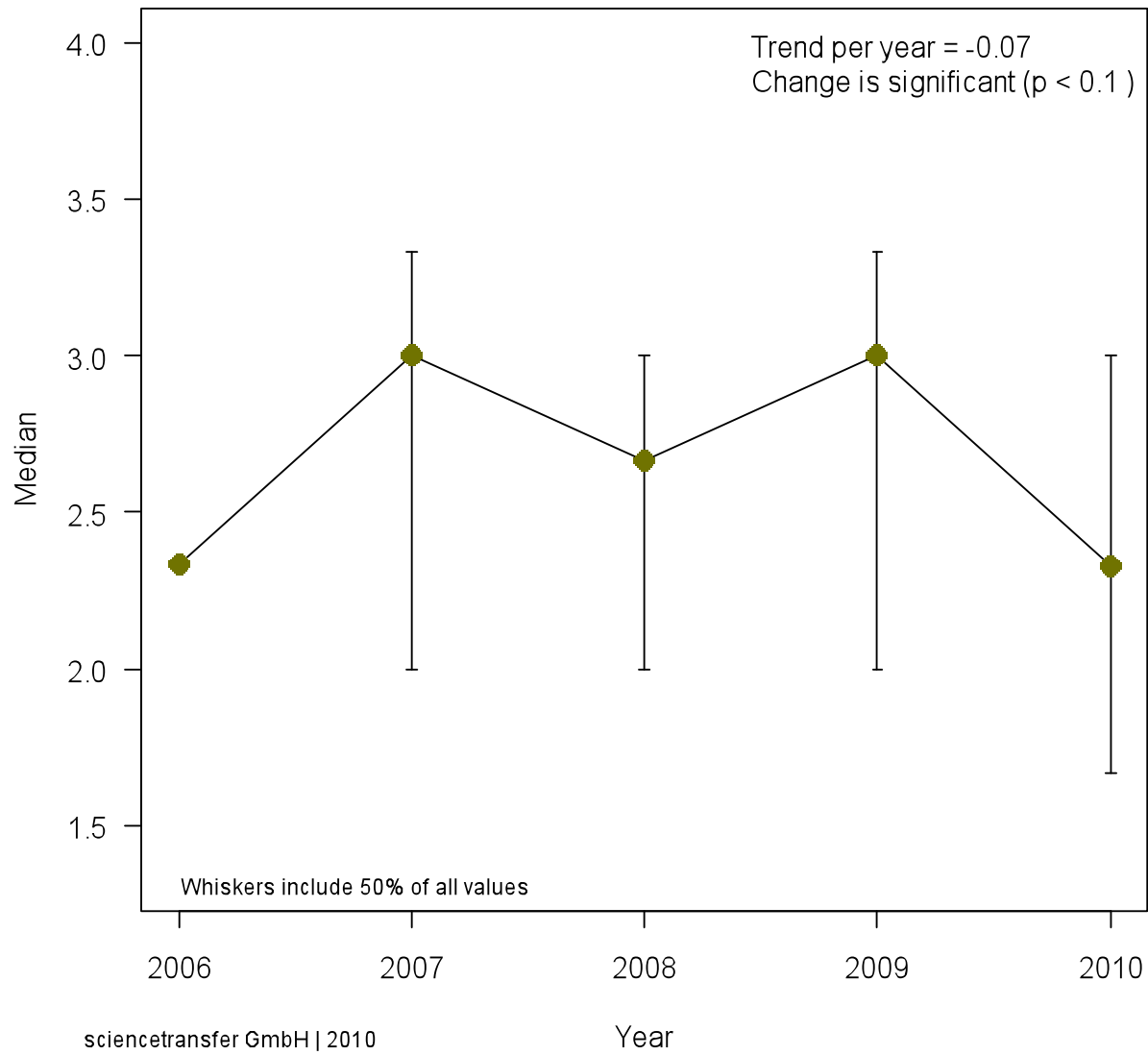


Supervisor support Repeater



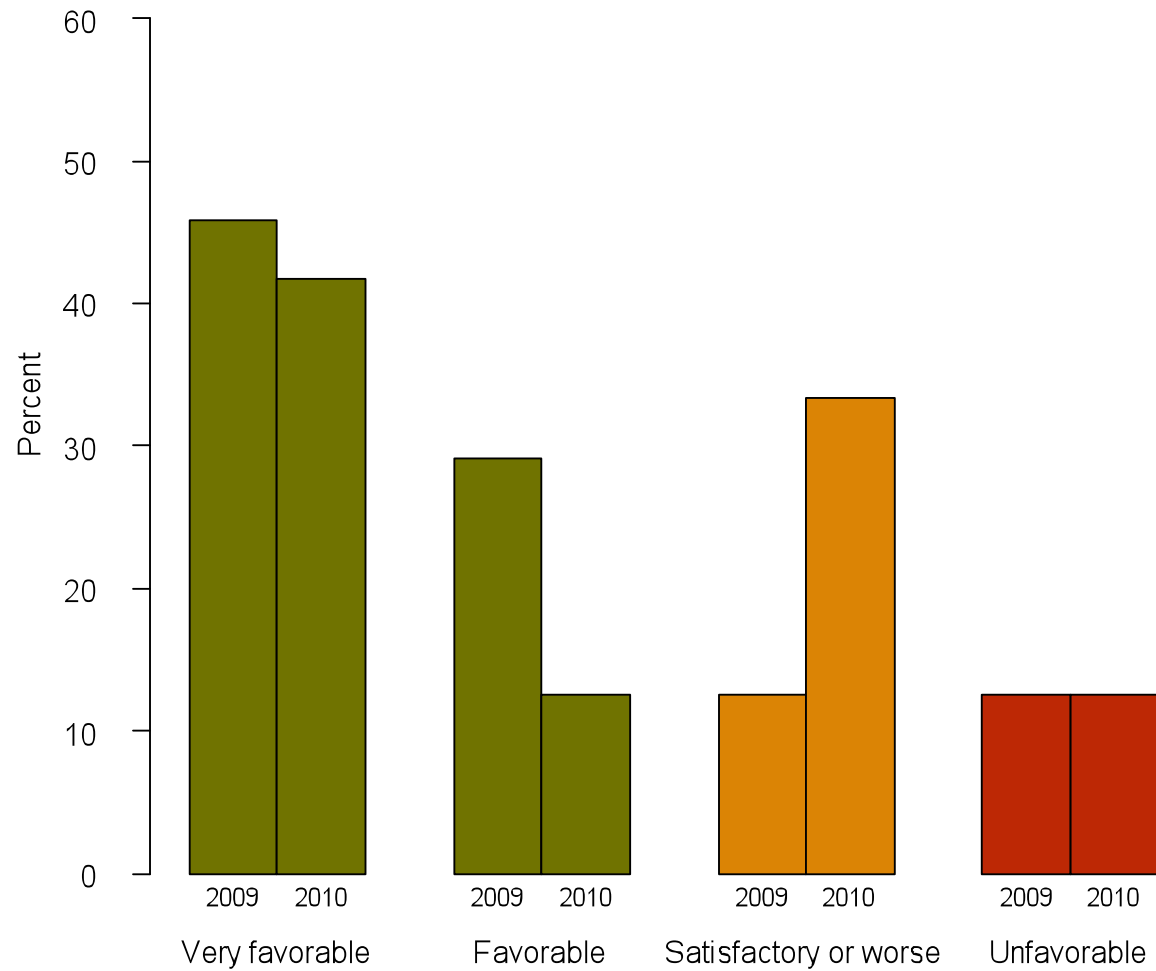
sciencetransfer GmbH | 2010

Supervisor support



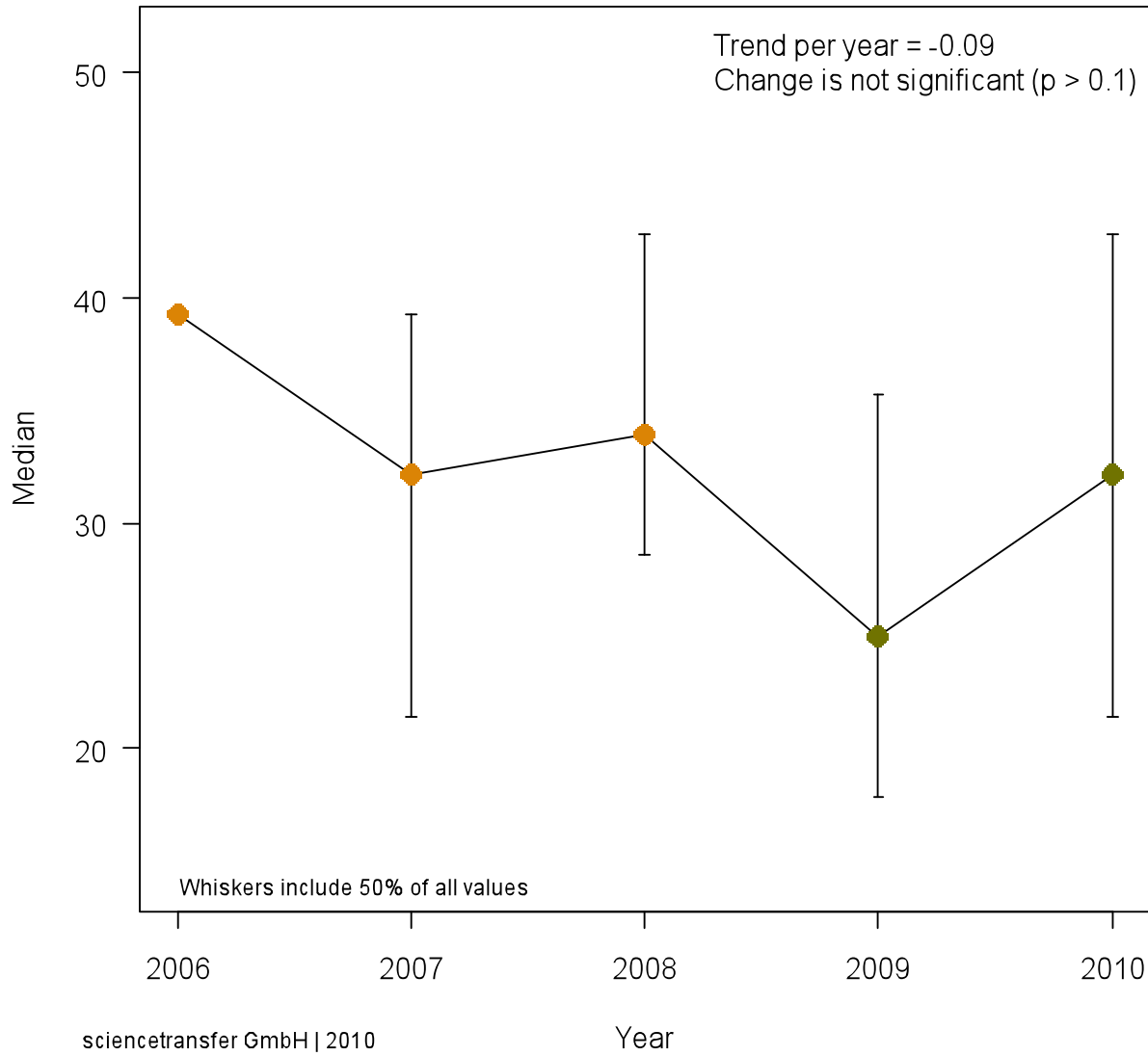
Work related burnout Repeater

Change is not significant ($p > 0.1$)



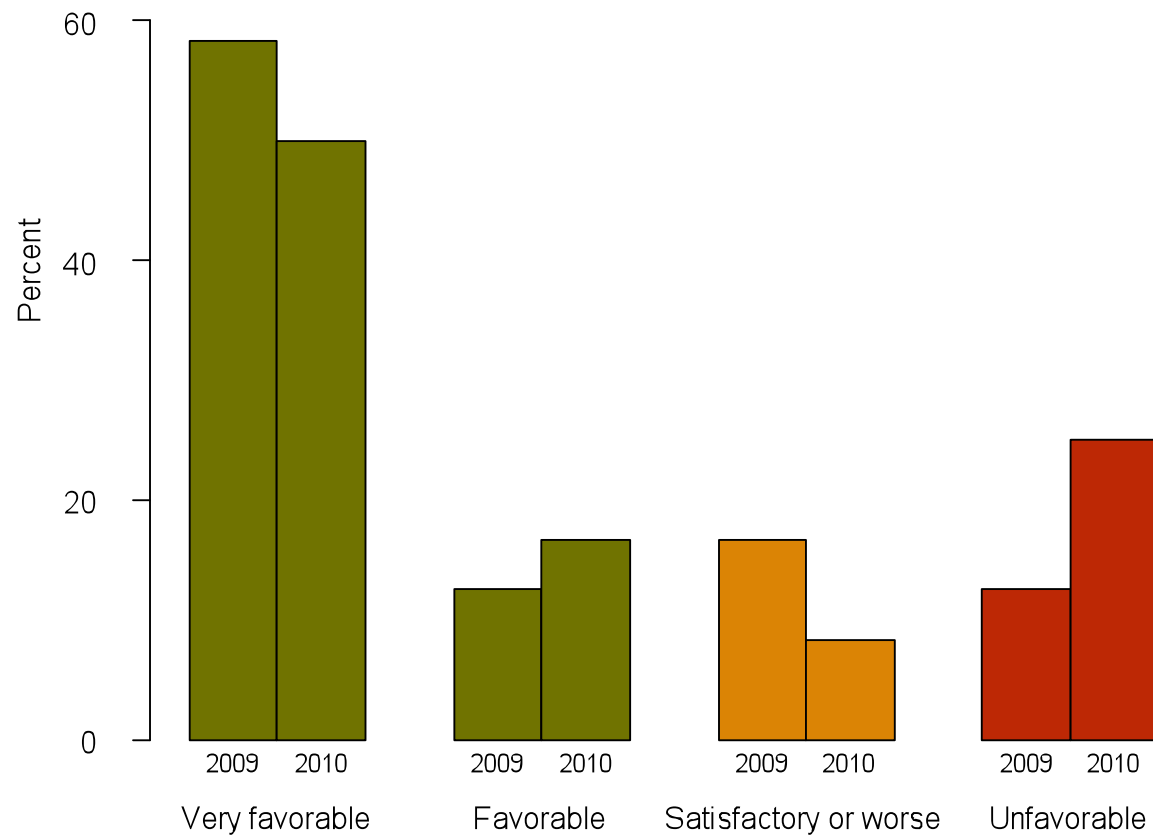
sciencetransfer GmbH | 2010

Work related burnout



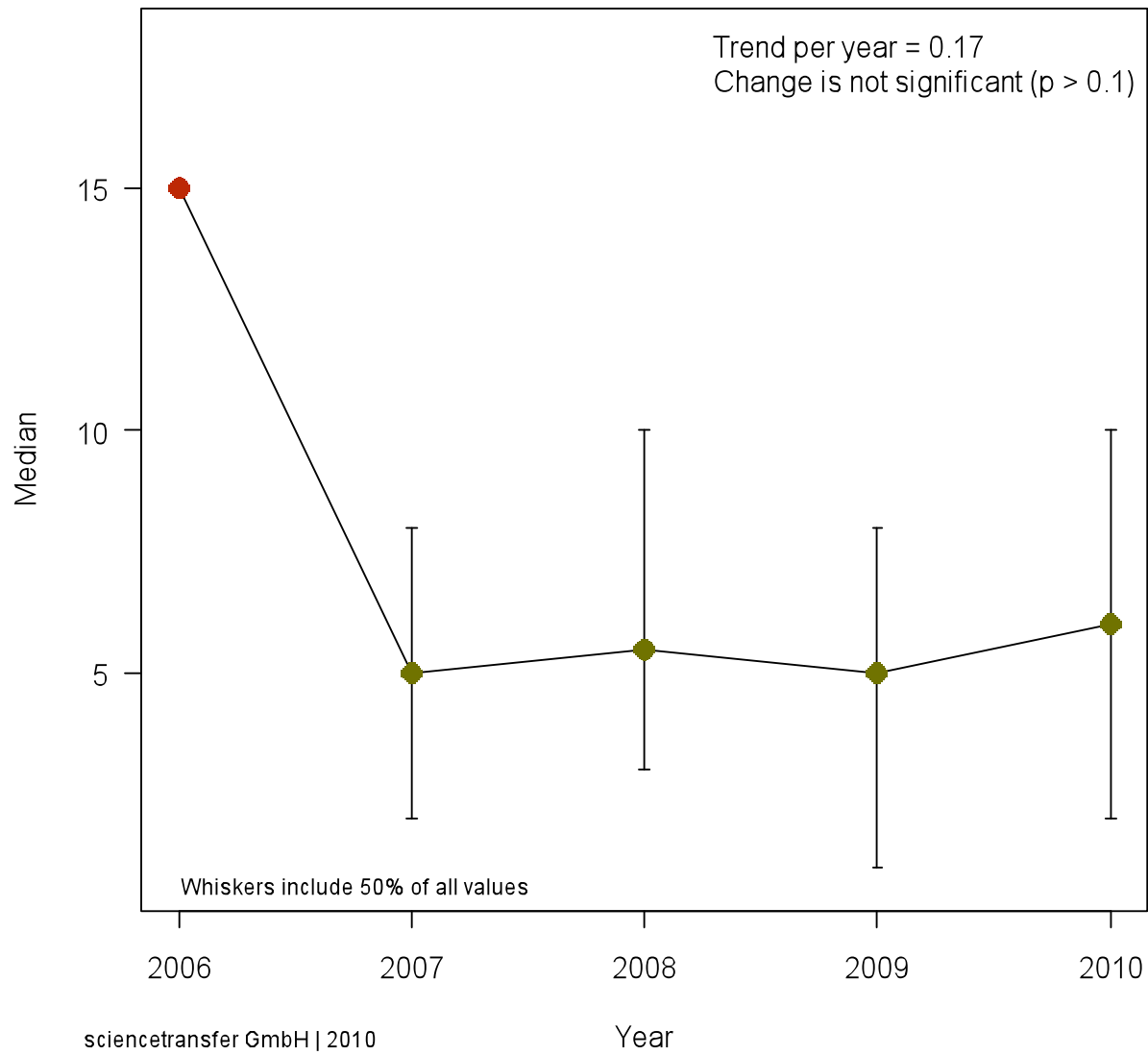
Vital Exhaustion Repeater

Change is not significant ($p > 0.1$)



sciencetransfer GmbH | 2010

Vital Exhaustion

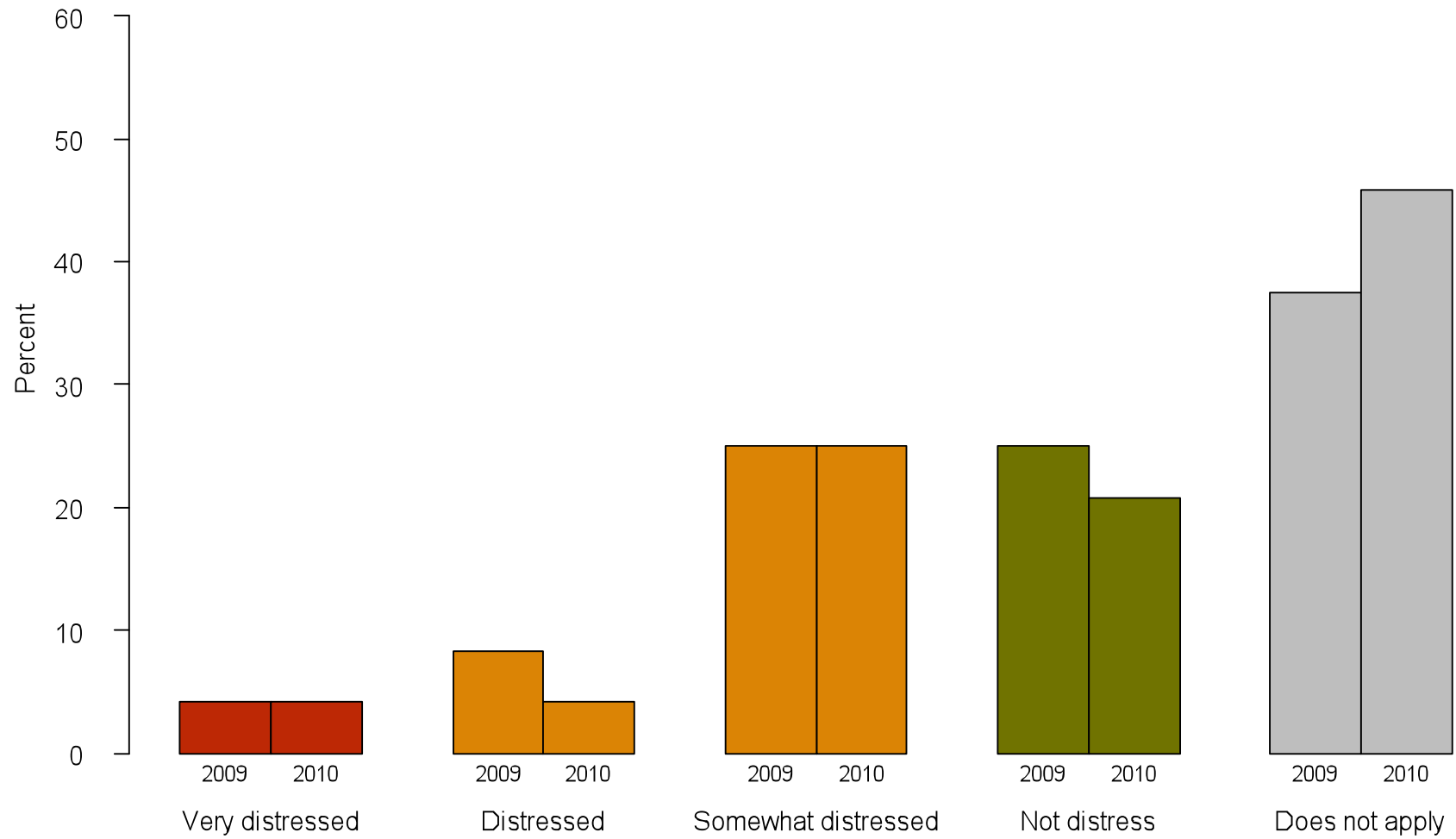


Location Anonymous

Organizational indicators

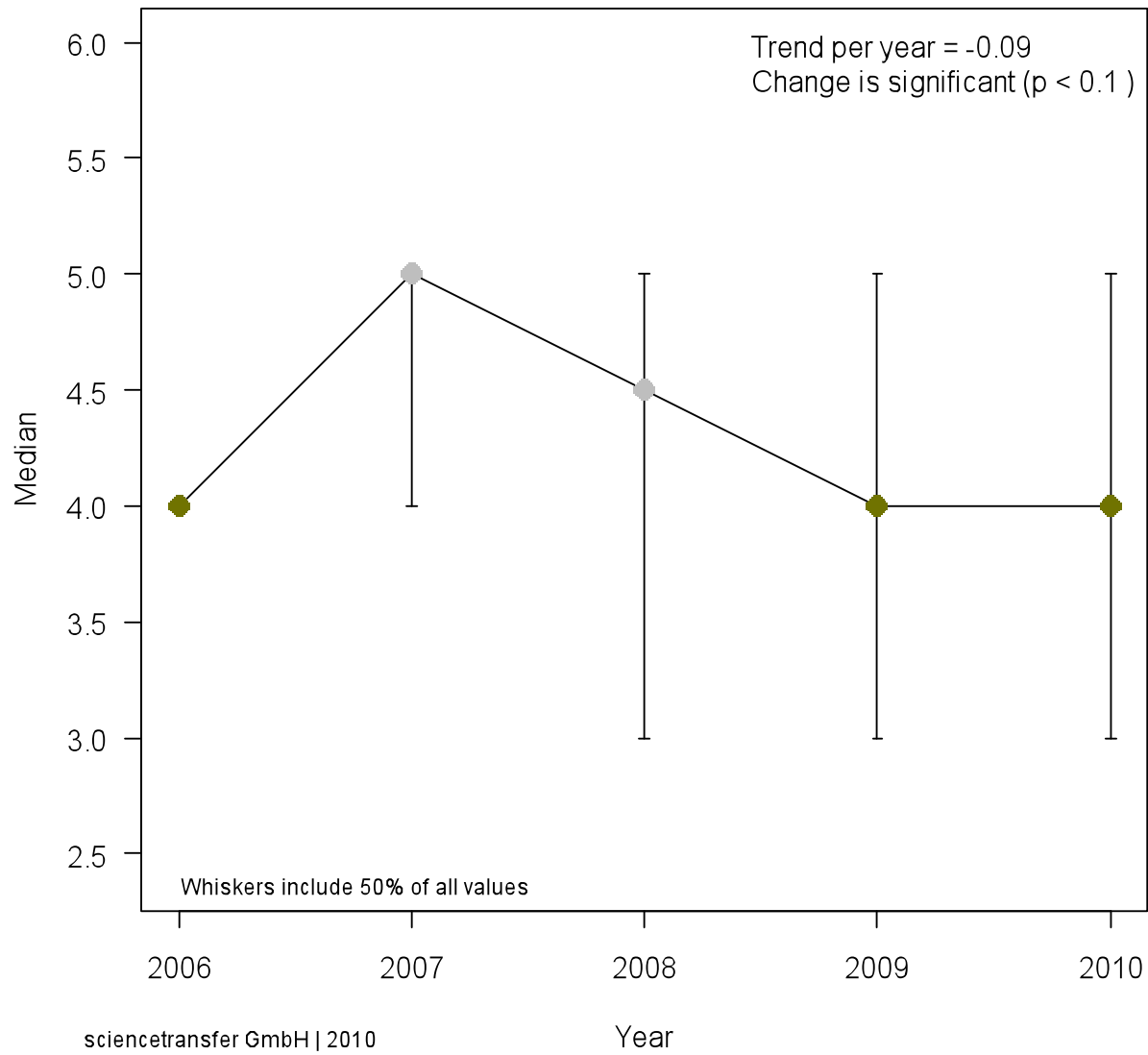
Job security Repeater

Change is not significant ($p > 0.1$)



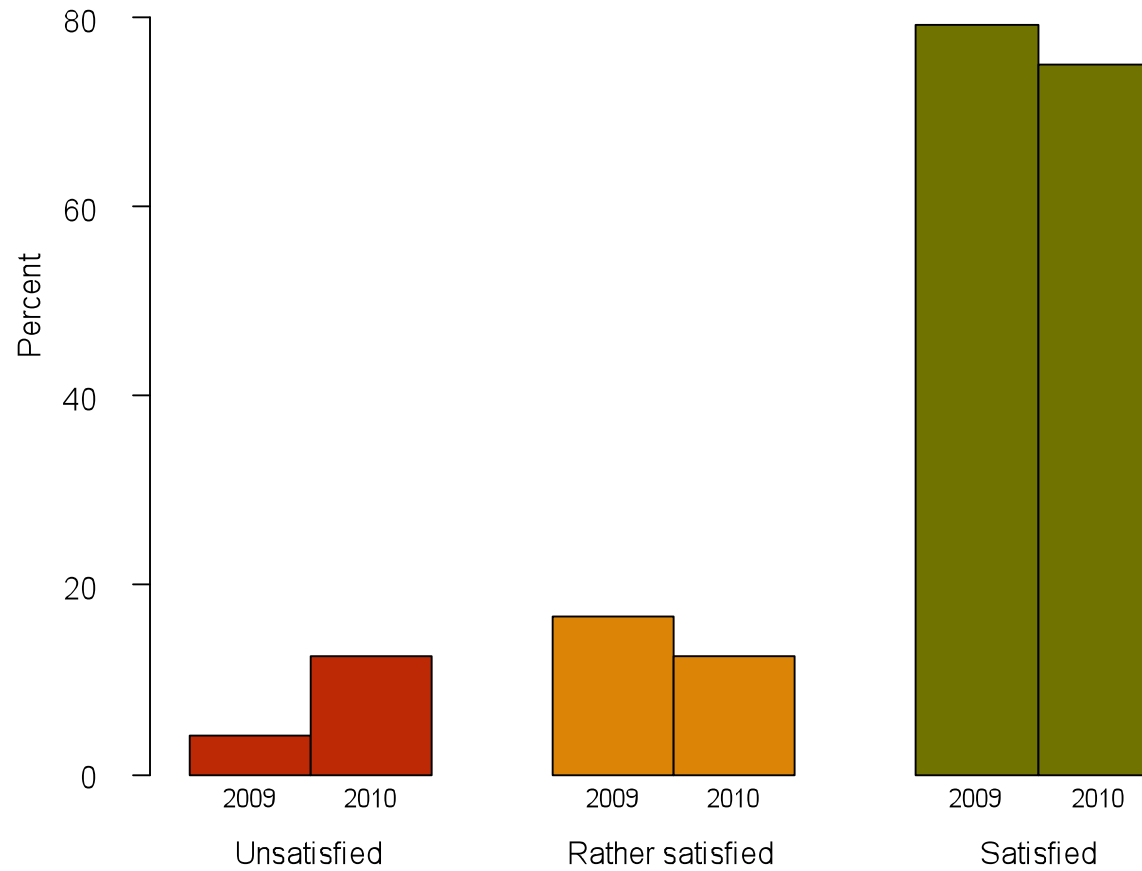
sciencetransfer GmbH | 2010

Job security



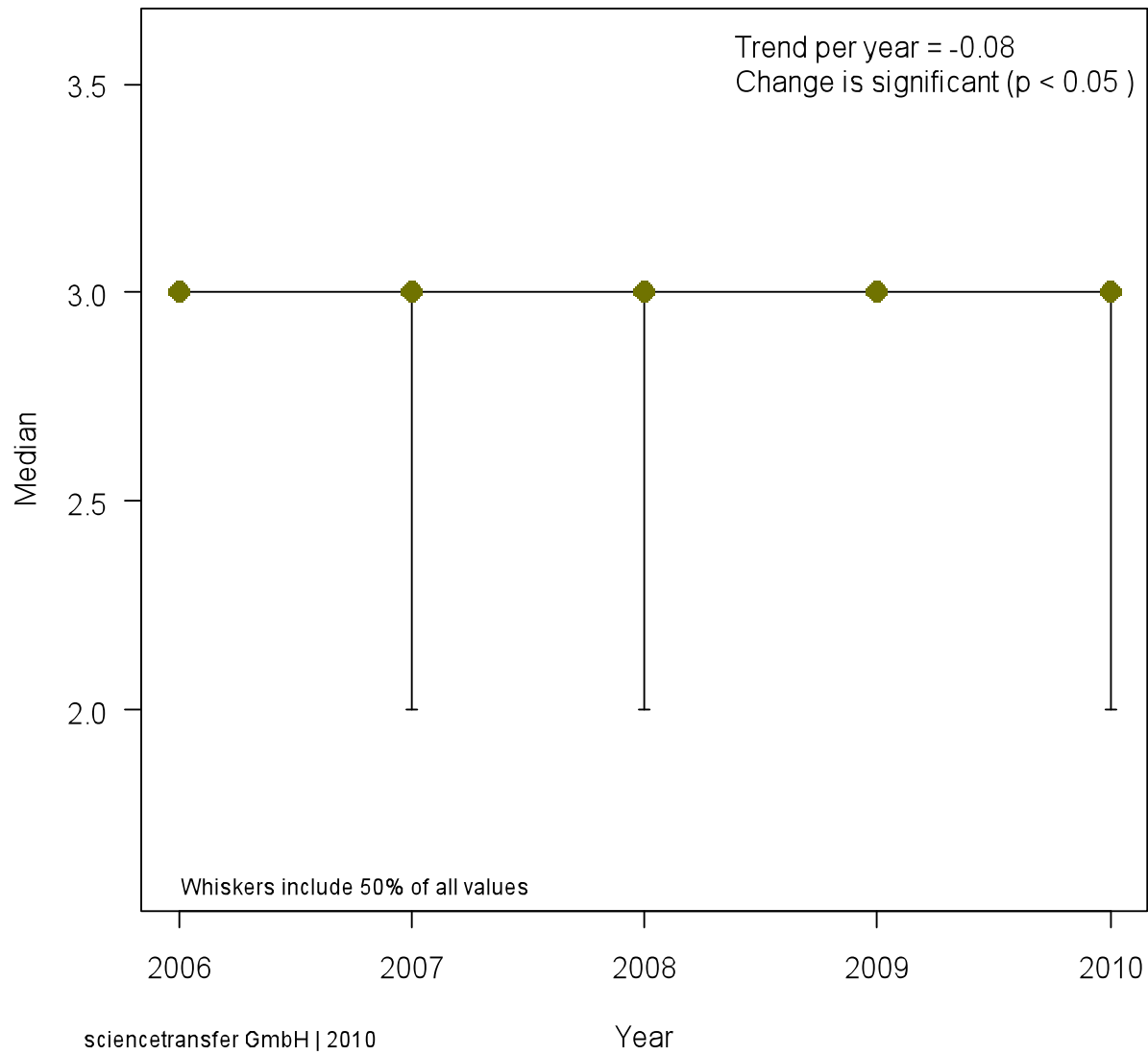
Work satisfaction Repeater

Change is not significant ($p > 0.1$)



sciencetransfer GmbH | 2010

Work satisfaction

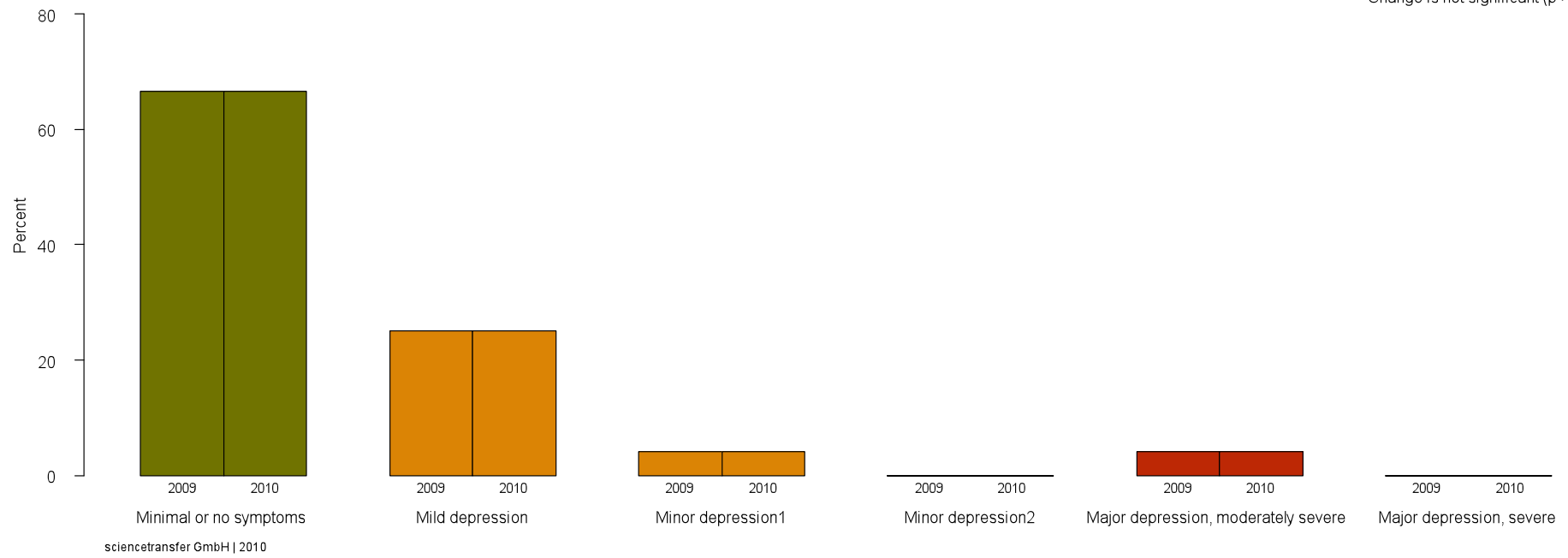


Location Anonymous

Specific health indicators

Depression Repeater

Change is not significant ($p > 0.1$)



Depression

